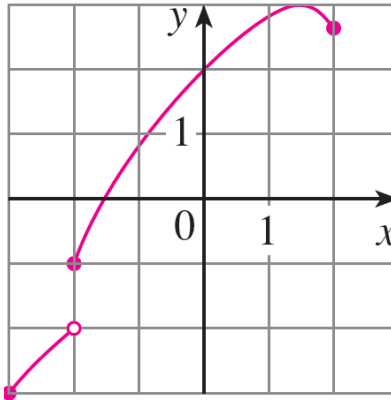


Exercise 9

Determine whether the curve is the graph of a function of x . If it is, state the domain and range of the function.



Solution

This curve is a function because it has only one value for any value of x . In other words, it passes the vertical line test. Its domain is $\{x \mid -3 \leq x \leq 2\}$, and its range is $\{y \mid -3 \leq y < -2 \text{ or } -1 \leq y \leq 3\}$.